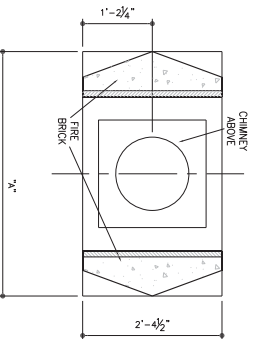


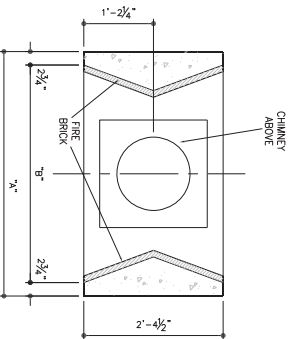
**CHIMNEY PLAN** SCALE: 1" = 1'-0"

| FIREPLACE SIZE | DIM A | DIM B   |
|----------------|-------|---------|
| 30             | 38"   | 32.1/2" |
| 36             | 44"   | 38.1/2" |
| 42             | 50"   | 44.1/2" |
| 48             | 56"   | 50.1/2" |

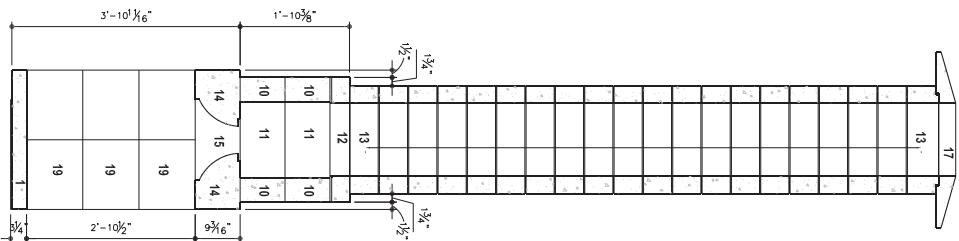
42" SIZE SHOWN TO SCALE - THIS DRAWING



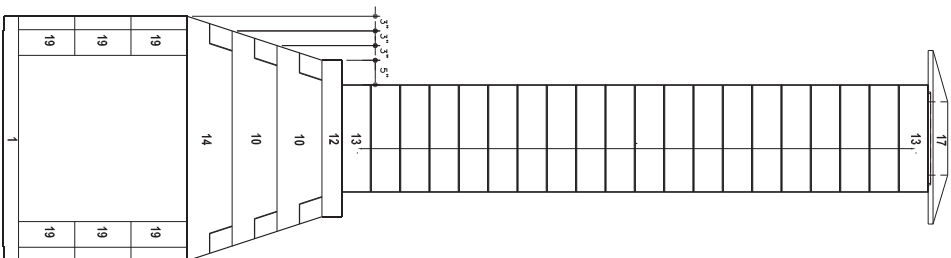
**FIREBOX ALT. PLAN** SCALE: 1" = 1'-0"



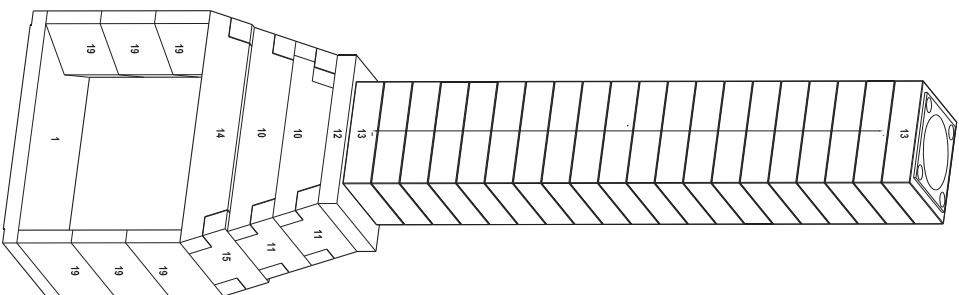
**FIREBOX PLAN** SCALE: 1" = 1'-0"



**SECTION A-A** SCALE: 1" = 1'-0"



**FRONT ELEVATION** SCALE: 1" = 1'-0"



**ISOMETRIC** SCALE: 1" = 1'-0"

| #  | COMPONENT NAME                |
|----|-------------------------------|
| 1  | BASE PLATE                    |
| 10 | SMOKE CHAMBER FRONT AND BACK  |
| 11 | UNIVERSAL SMOKE CHAMBER SIDES |
| 12 | CHIMNEY BASE                  |
| 13 | CHIMNEY BLOCK                 |
| 14 | SEE-THROUGH RADIUS THROAT     |
| 15 | SEE-THROUGH THROAT SIDE       |
| 17 | CHIMNEY CAP                   |
| 19 | SEE-THROUGH FIREBOX SIDE      |

1.) ALL DIMENSIONS SHOWN THIS SHEET ARE SPECIFIC TO THIS SYSTEM.  
2.) Flip Base Plate and install up side down

**FireRock**  
The fireplace, rekindled.  
**SEE-THROUGH  
FIREPLACE  
SYSTEM**

RELEASE DATE: 04/02/09  
SCALE: 1" = 1'-0"

**SHEET  
ST**